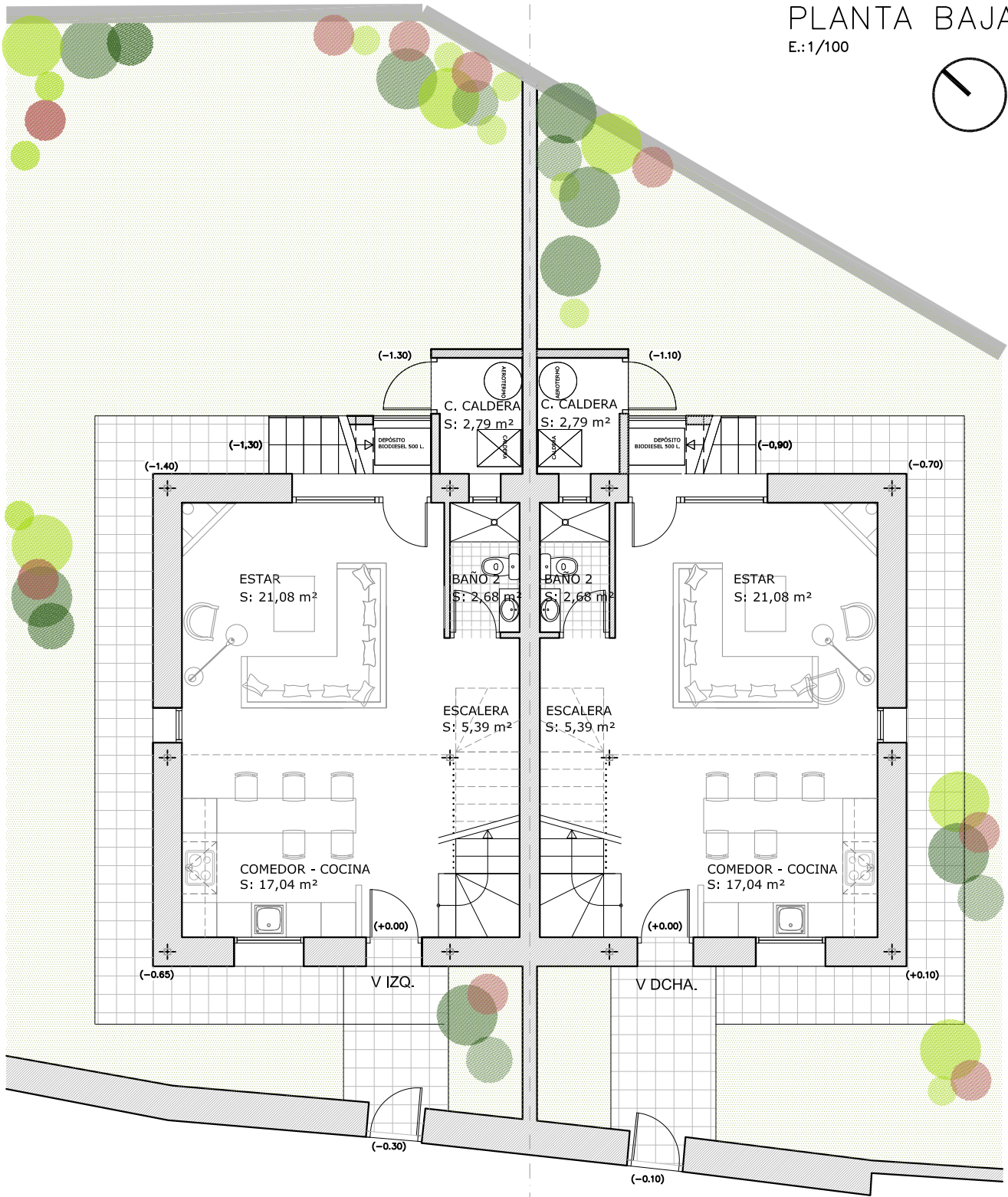


PLANTA BAJA

E.: 1/100



SUPERFICIES V. IZQ

	SUP. UTIL	SUP. CONSTRUIDA
PLANTA BAJA	46.19 M2	55.25 M2
PLANTA ALTA	36.74 M2	55.25 M2
NO VIVIDERO	2.96 M2	3.79 M2
TOTAL	85.89 M2	114.29 M2

SUPERFICIES V. DCHA

	SUP. UTIL	SUP. CONSTRUIDA
PLANTA BAJA	46.19 M2	55.25 M2
PLANTA ALTA	36.74 M2	55.25 M2
NO VIVIDERO	3.14 M2	4.03 M2
TOTAL	86.07 M2	114.53 M2